

Homework Question #1

Computer R US - \$23.50

$$y = \underline{23.5}x$$

Computer Access - \$25
Slope of graph is 25

Homework Question #2

$$y = mx$$

$$x = 150$$

$$y = 50$$

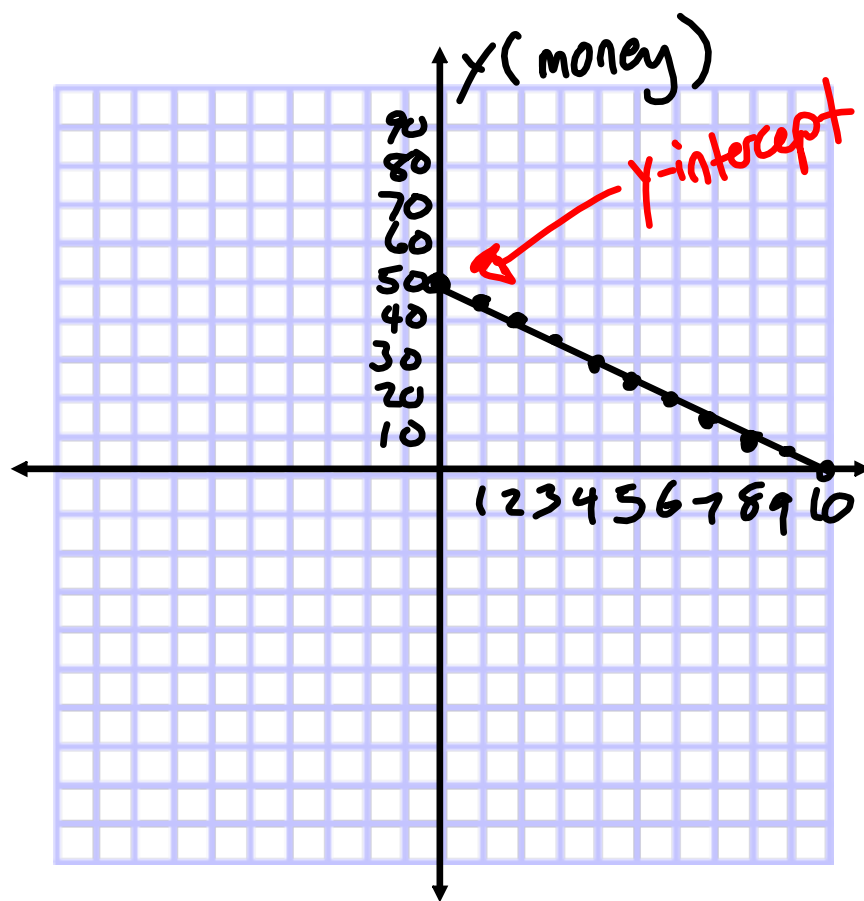
$$\frac{50}{150} = \frac{m(150)}{150}$$

$$\frac{1}{3} = m$$

$$y = \frac{1}{3}x$$

$$y = \frac{1}{3}(120)$$

$$y = 40$$



Mr. Unlucky deposited \$50 into the bank. Each day, the bank takes \$5 away.

Graph Mr. Unlucky's money over time.

$$y = mx + b \quad (\text{slope-intercept form})$$

slope
(move)

y-intercept
(begin)

pg. 202 #1 a, b, c